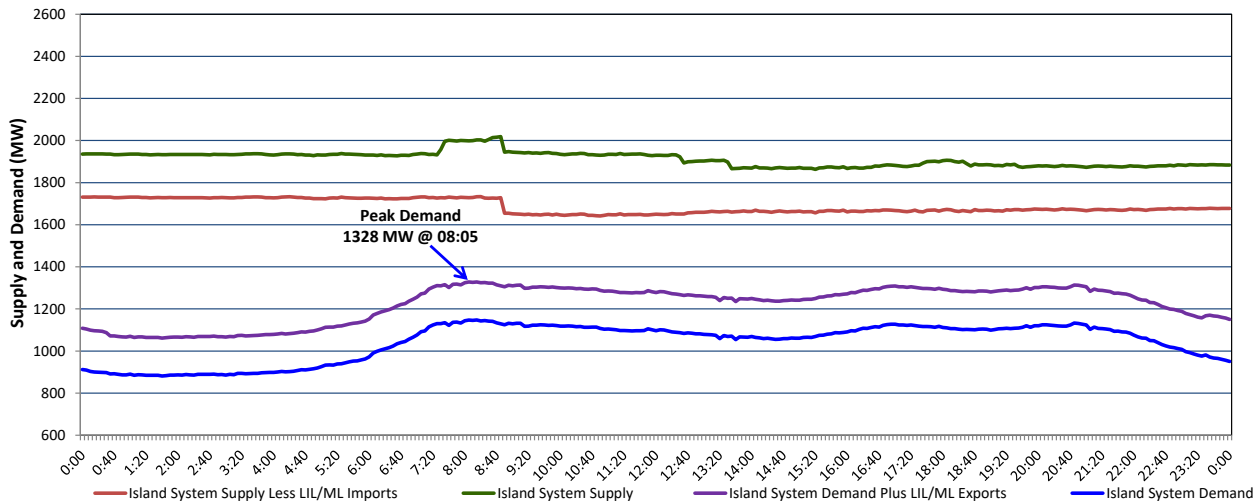


Newfoundland Labrador Hydro (NLH) Supply and Demand Status Report Filed Tuesday, April 12, 2022

Section 1 Island Interconnected System Supply, Demand & Exports Actual 24 Hour System Performance For Monday, April 11, 2022



Supply Notes For April 11, 2022

1,2

- A As of 1256 hours, April 03, 2022, Paradise River Unit unavailable due to planned outage (8 MW).
- B As of 0857 hours, April 04, 2022, Holyrood Unit 3 unavailable due to planned outage (150 MW).
- C As of 1700 hours, April 10, 2022, Holyrood Unit 2 available but not operating 150 MW (170 MW).
- D **At 0850 hours, April 11, 2022, Bay d'Espoir Unit 1 unavailable due to planned outage (76.5 MW).**

Section 2 Island Interconnected Supply and Demand

Tue, Apr 12, 2022	Island System Outlook ³	Seven-Day Forecast	Temperature (°C)		Island System Daily Peak Demand (MW)	
			Morning	Evening	Forecast	Adjusted ⁷
Available Island System Supply: ⁵	1,837 MW	Tuesday, April 12, 2022	1	2	1,445	1,348
NLH Island Generation: ^{4,8}	1,290 MW	Wednesday, April 13, 2022	1	0	1,210	1,116
NLH Island Power Purchases: ⁶	160 MW	Thursday, April 14, 2022	0	-1	1,215	1,121
Other Island Generation:	230 MW	Friday, April 15, 2022	-3	-2	1,170	1,076
ML/LIL Imports:	157 MW	Saturday, April 16, 2022	1	0	1,090	997
Current St. John's Temperature & Windchill:	0 °C	Sunday, April 17, 2022	3	4	1,045	953
7-Day Island Peak Demand Forecast:	1,445 MW	Monday, April 18, 2022	4	3	1,125	1,032

Supply Notes For April 12, 2022

3

- Notes:
1. Generation outages for running and corrective maintenance are included. These are not unusual for power system operations. They generally do not impact customer supply. The power system operators schedule outages to system equipment whenever possible to coincide with periods when customer demands are low and sufficient supply reserves are available. However, from time to time equipment outages are necessary and reserves may be impacted.
 2. Due to the Island system having no synchronous connections to the larger North American grid, when there is a sudden loss of large generating units there may be a requirement for some customer's load to be interrupted for short periods to bring generation output equal to customer demand. This automatic action of power system protection, referred to as under frequency load shedding (UFLS), is necessary to ensure the integrity and reliability of system equipment. Under frequency events have typically occurred 5 to 8 times per year on the Island Interconnected System and the resultant customer load interruptions are generally less than 30 minutes. With the activation of the Maritime Link frequency controller during the winter of 2018, UFLS events have occurred less frequently.
 3. As of 0800 Hours.
 4. Gross output including station service at Holyrood (24.5 MW) and improved NLH hydraulic output due to water levels (35 MW).
 5. Gross output from all Island sources (including Note 4).
 6. NLH Island Power Purchases include: CBPP Co-Gen, Nalcor Exploits, Rattle Brook, Star Lake, Wind Generation and capacity assistance (when applicable).
 7. Adjusted for curtailable load, market activities and the impact of voltage reduction when applicable.
 8. Due to limitations inherent in the design of combustion turbines, the output of combustion turbines may be reduced in the event that ambient temperatures exceed the threshold

Section 3 Island Peak Demand Information Previous Day Actual Peak and Current Day Forecast Peak

Mon, Apr 11, 2022	Actual Island Peak Demand ⁹	8:05	1,328 MW
Tue, Apr 12, 2022	Forecast Island Peak Demand		1,445 MW

- Notes: 9. Island Demand / LIL / ML Exports (where applicable) is supplied by NLH generation and purchases, plus generation owned and operated by Newfoundland Power and Corner Brook Pulp & Paper (Deer Lake Power, DLP).